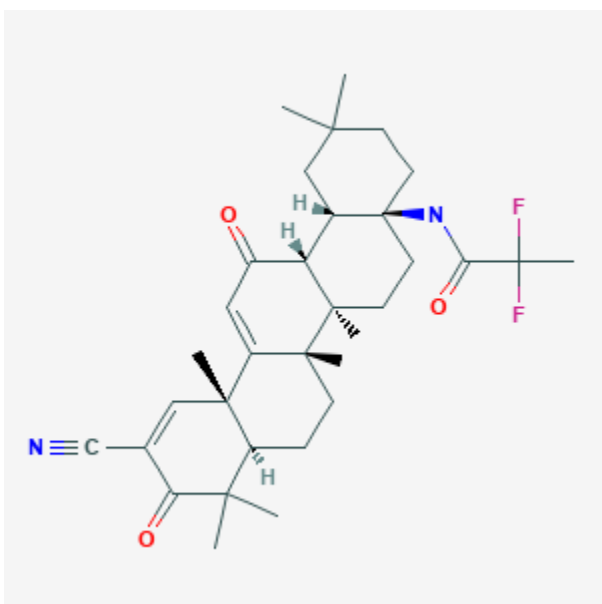




Omaveloxolone

Revised: April 15, 2023.

CASRN: 1474034-05-3



Drug Levels and Effects

Summary of Use during Lactation

No information is available on the clinical use of omaveloxolone during breastfeeding. Because it is 97% protein bound, exposure of the breastfed infant is likely to be low. Until more data become available, omaveloxolone should be used with caution during breastfeeding, especially while nursing a newborn or preterm infant

Drug Levels

Maternal Levels. Relevant published information was not found as of the revision date.

Infant Levels. Relevant published information was not found as of the revision date.

Disclaimer: Information presented in this database is not meant as a substitute for professional judgment. You should consult your healthcare provider for breastfeeding advice related to your particular situation. The U.S. government does not warrant or assume any liability or responsibility for the accuracy or completeness of the information on this Site.

Attribution Statement: LactMed is a registered trademark of the U.S. Department of Health and Human Services.

Effects in Breastfed Infants

Relevant published information was not found as of the revision date.

Effects on Lactation and Breastmilk

Relevant published information was not found as of the revision date.

Substance Identification

Substance Name

Omaveloxolone

CAS Registry Number

1474034-05-3

Drug Class

Breast Feeding

Lactation

Milk, Human