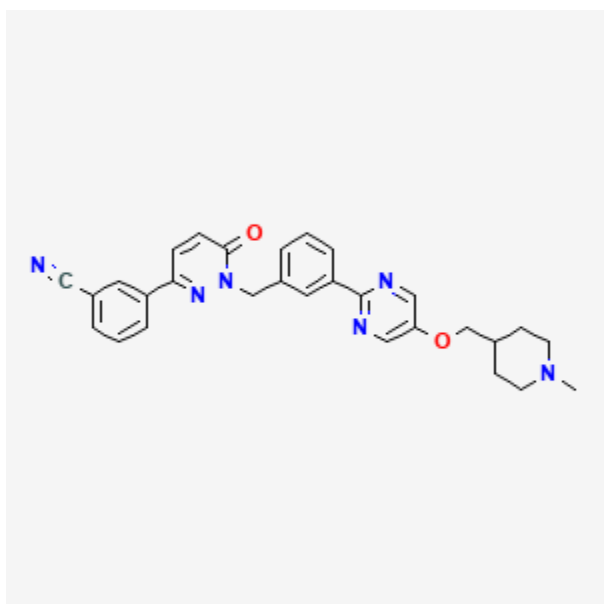




## Tepotinib

Revised: September 20, 2021.

CASRN: 1100598-32-0



## Drug Levels and Effects

### Summary of Use during Lactation

No information is available on the clinical use of tepotinib during breastfeeding. Because tepotinib is 98% bound to plasma proteins, the amount in milk is likely to be low. However, because of its potential toxicity in the breastfed infant and its half-life of 32 hours, the manufacturer recommends that breastfeeding be discontinued during tepotinib therapy and for 1 week after the last dose.

### Drug Levels

*Maternal Levels.* Relevant published information was not found as of the revision date.

*Infant Levels.* Relevant published information was not found as of the revision date.

**Disclaimer:** Information presented in this database is not meant as a substitute for professional judgment. You should consult your healthcare provider for breastfeeding advice related to your particular situation. The U.S. government does not warrant or assume any liability or responsibility for the accuracy or completeness of the information on this Site.

**Attribution Statement:** LactMed is a registered trademark of the U.S. Department of Health and Human Services.

## Effects in Breastfed Infants

Relevant published information was not found as of the revision date.

## Effects on Lactation and Breastmilk

Relevant published information was not found as of the revision date.

## Substance Identification

### Substance Name

Tepotinib

### CAS Registry Number

1100598-32-0

### Drug Class

Breast Feeding

Lactation

Antineoplastic Agents

Enzyme Inhibitors

Protein Kinase Inhibitors

Tyrosine Kinase Inhibitors