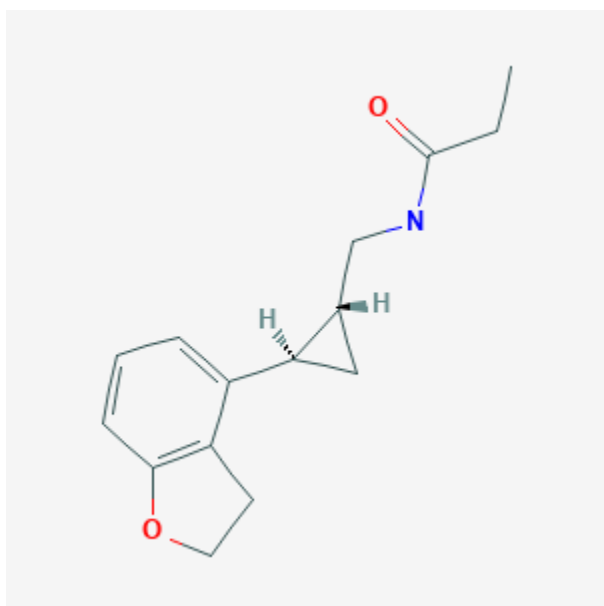




## Tasimelteon

Revised: December 21, 2020.

CASRN: 609799-22-6



## Drug Levels and Effects

### Summary of Use during Lactation

No information is available on the use of tasimelteon during breastfeeding. Monitor the infant for drowsiness and adequate feeding, especially while nursing a newborn or preterm infant. Until more data become available an alternate drug may be preferred.

### Drug Levels

*Maternal Levels.* Relevant published information was not found as of the revision date.

*Infant Levels.* Relevant published information was not found as of the revision date.

**Disclaimer:** Information presented in this database is not meant as a substitute for professional judgment. You should consult your healthcare provider for breastfeeding advice related to your particular situation. The U.S. government does not warrant or assume any liability or responsibility for the accuracy or completeness of the information on this Site.

**Attribution Statement:** LactMed is a registered trademark of the U.S. Department of Health and Human Services.

## Effects in Breastfed Infants

Relevant published information was not found as of the revision date.

## Effects on Lactation and Breastmilk

Relevant published information was not found as of the revision date.

## Alternate Drugs to Consider

Zaleplon, Zolpidem

## Substance Identification

### Substance Name

Tasimelteon

### CAS Registry Number

609799-22-6

### Drug Class

Breast Feeding

Lactation

Central Nervous System Depressants