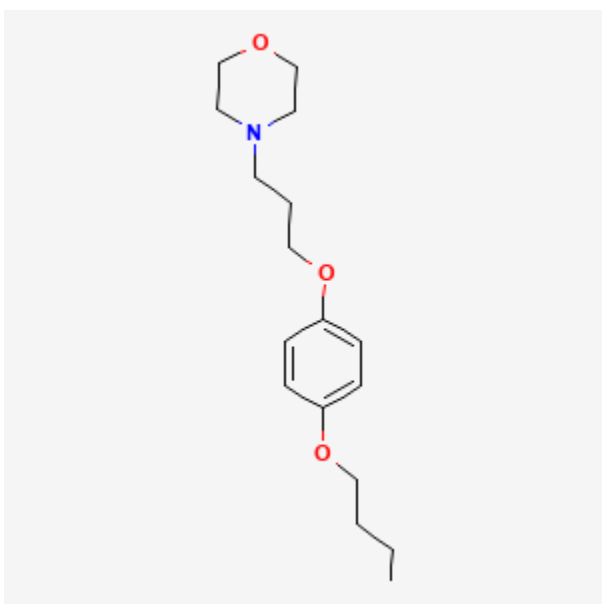




## Pramoxine

Revised: November 16, 2020.

CASRN: 140-65-8



## Drug Levels and Effects

### Summary of Use during Lactation

No information is available on the use of pramoxine during breastfeeding. Direct ingestion of pramoxine has resulted mostly of nausea and vomiting, with no serious toxicity;[1] however, it should be wiped off thoroughly prior to nursing if it is being applied to the breast or nipple area.

### Drug Levels

*Maternal Levels.* Relevant published information was not found as of the revision date.

*Infant Levels.* Relevant published information was not found as of the revision date.

**Disclaimer:** Information presented in this database is not meant as a substitute for professional judgment. You should consult your healthcare provider for breastfeeding advice related to your particular situation. The U.S. government does not warrant or assume any liability or responsibility for the accuracy or completeness of the information on this Site.

**Attribution Statement:** LactMed is a registered trademark of the U.S. Department of Health and Human Services.

## Effects in Breastfed Infants

Relevant published information was not found as of the revision date.

## Effects on Lactation and Breastmilk

Relevant published information was not found as of the revision date.

## References

1. Spiller HA, Baker SD, Smith GW, et al. Evaluation of pramoxine ingestion as reported to poison centers. *Ann Pharmacother.* 2006;40:996–7. PubMed PMID: 16595565.

## Substance Identification

### Substance Name

Pramoxine

### CAS Registry Number

637-58-1

### Drug Class

Breast Feeding

Lactation

Anesthetics, Local