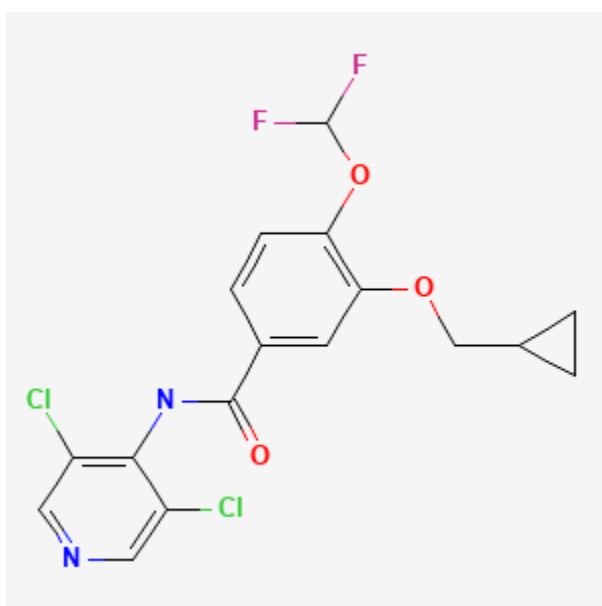




## Roflumilast

Revised: February 15, 2024.

CASRN: 162401-32-3



## Drug Levels and Effects

### Summary of Use during Lactation

No information is available on the use of roflumilast in nursing mothers. The drug and its metabolite are more than 97% bound to plasma proteins, so amounts in milk are likely to be very low. However, the manufacturer and some experts recommend that the oral drug should not be used by women who are nursing.[1]

### Drug Levels

*Maternal Levels.* Relevant published information was not found as of the revision date.

*Infant Levels.* Relevant published information was not found as of the revision date.

---

**Disclaimer:** Information presented in this database is not meant as a substitute for professional judgment. You should consult your healthcare provider for breastfeeding advice related to your particular situation. The U.S. government does not warrant or assume any liability or responsibility for the accuracy or completeness of the information on this Site.

**Attribution Statement:** LactMed is a registered trademark of the U.S. Department of Health and Human Services.

## Effects in Breastfed Infants

Relevant published information was not found as of the revision date.

## Effects on Lactation and Breastmilk

Relevant published information was not found as of the revision date.

## References

1. Yaghi M, McMullan P, Truong TM, et al. Safety of dermatologic medications in pregnancy and lactation: An Update - Part II: Lactation. J Am Acad Dermatol 2024. PubMed PMID: 38280680.

## Substance Identification

### Substance Name

Roflumilast

### CAS Registry Number

162401-32-3

### Drug Class

Breast Feeding

Lactation

Milk, Human

Phosphodiesterase 4 Inhibitors