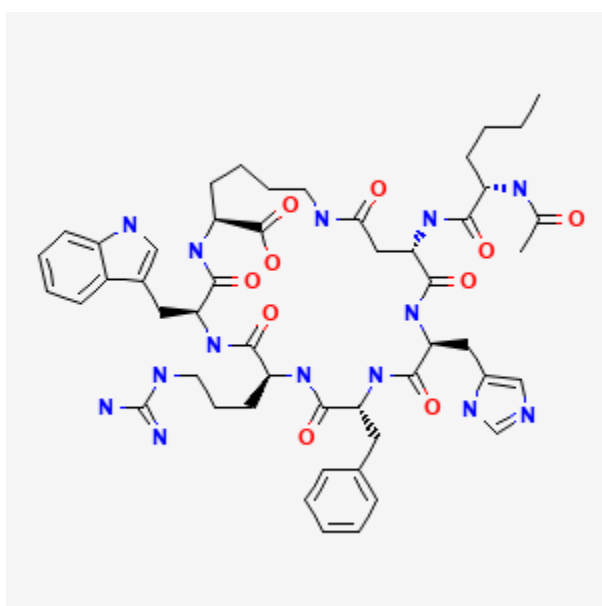




Bremelanotide

Revised: October 23, 2019.

CASRN: 189691-06-3



Drug Levels and Effects

Summary of Use during Lactation

No information is available on the clinical use of bremelanotide during breastfeeding. Because bremelanotide is a cyclic peptide molecule with a molecular weight of 1025, the amount in milk is likely to be very low and absorption is unlikely because it is probably destroyed in the infant's gastrointestinal tract. Until more data become available, bremelanotide should be used with caution during breastfeeding, especially while nursing a newborn or preterm infant.

Drug Levels

Maternal Levels. Relevant published information was not found as of the revision date.

Disclaimer: Information presented in this database is not meant as a substitute for professional judgment. You should consult your healthcare provider for breastfeeding advice related to your particular situation. The U.S. government does not warrant or assume any liability or responsibility for the accuracy or completeness of the information on this Site.

Attribution Statement: LactMed is a registered trademark of the U.S. Department of Health and Human Services.

Infant Levels. Relevant published information was not found as of the revision date.

Effects in Breastfed Infants

Relevant published information was not found as of the revision date.

Effects on Lactation and Breastmilk

Relevant published information was not found as of the revision date.

Substance Identification

Substance Name

Bremelanotide

CAS Registry Number

189691-06-3

Drug Class

Breastfeeding

Lactation

Peptides, Cyclic