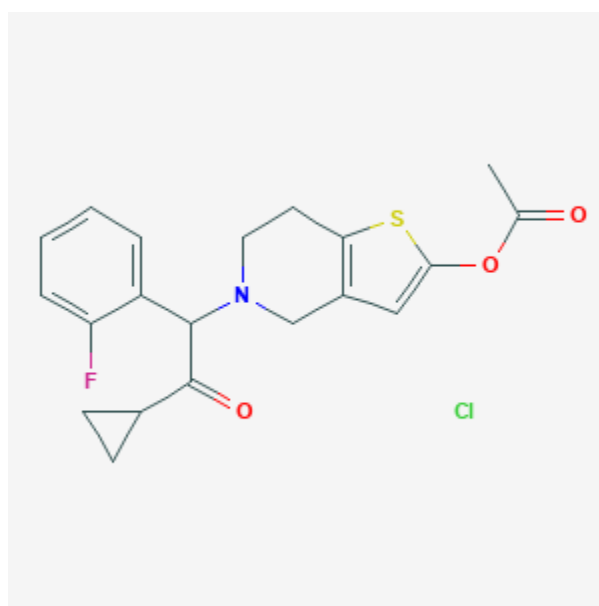




## Prasugrel

Revised: June 3, 2019.

CASRN: 389574-19-0



## Drug Levels and Effects

### Summary of Use during Lactation

No published information is available on the use of prasugrel during breastfeeding. Until more data become available, prasugrel should be used with caution during breastfeeding, especially while nursing a newborn or preterm infant. If it is used by a nursing mother, monitor the infant for bruising and bleeding.

### Drug Levels

*Maternal Levels.* Relevant published information was not found as of the revision date.

*Infant Levels.* Relevant published information was not found as of the revision date.

**Disclaimer:** Information presented in this database is not meant as a substitute for professional judgment. You should consult your healthcare provider for breastfeeding advice related to your particular situation. The U.S. government does not warrant or assume any liability or responsibility for the accuracy or completeness of the information on this Site.

**Attribution Statement:** LactMed is a registered trademark of the U.S. Department of Health and Human Services.

## Effects in Breastfed Infants

Relevant published information was not found as of the revision date.

## Effects on Lactation and Breastmilk

Relevant published information was not found as of the revision date.

## Alternate Drugs to Consider

Aspirin

## Substance Identification

### Substance Name

Prasugrel

### CAS Registry Number

389574-19-0

### Drug Class

Breastfeeding

Lactation

Platelet Aggregation Inhibitors