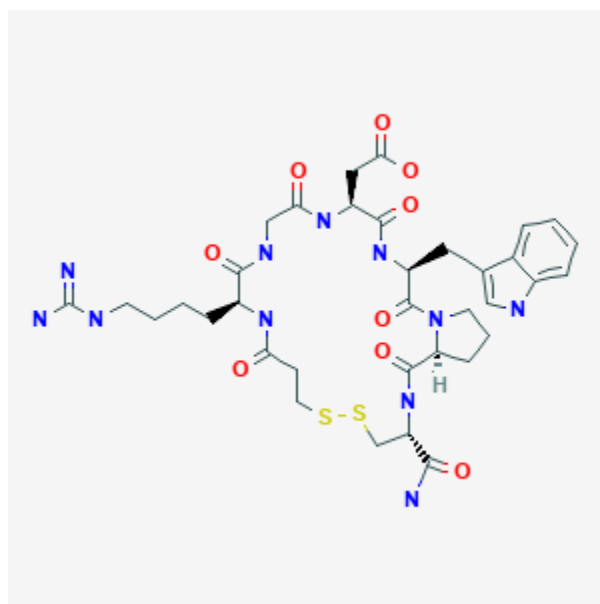




Eptifibatide

Revised: June 3, 2019.

CASRN: 188627-80-7



Drug Levels and Effects

Summary of Use during Lactation

No published information is available on the use of eptifibatide during breastfeeding. Because eptifibatide is a peptide, absorption by the infant is unlikely because it is probably destroyed in the infant's gastrointestinal tract. Until more data become available, eptifibatide should be used with caution during breastfeeding, especially while nursing a newborn or preterm infant. If it is used by a nursing mother, monitor the infant for bruising and bleeding.

Drug Levels

Maternal Levels. Relevant published information was not found as of the revision date.

Disclaimer: Information presented in this database is not meant as a substitute for professional judgment. You should consult your healthcare provider for breastfeeding advice related to your particular situation. The U.S. government does not warrant or assume any liability or responsibility for the accuracy or completeness of the information on this Site.

Attribution Statement: LactMed is a registered trademark of the U.S. Department of Health and Human Services.

Infant Levels. Relevant published information was not found as of the revision date.

Effects in Breastfed Infants

Relevant published information was not found as of the revision date.

Effects on Lactation and Breastmilk

Relevant published information was not found as of the revision date.

Alternate Drugs to Consider

Aspirin

Substance Identification

Substance Name

Eptifibatide

CAS Registry Number

188627-80-7

Drug Class

Breastfeeding

Lactation

Platelet Aggregation Inhibitors