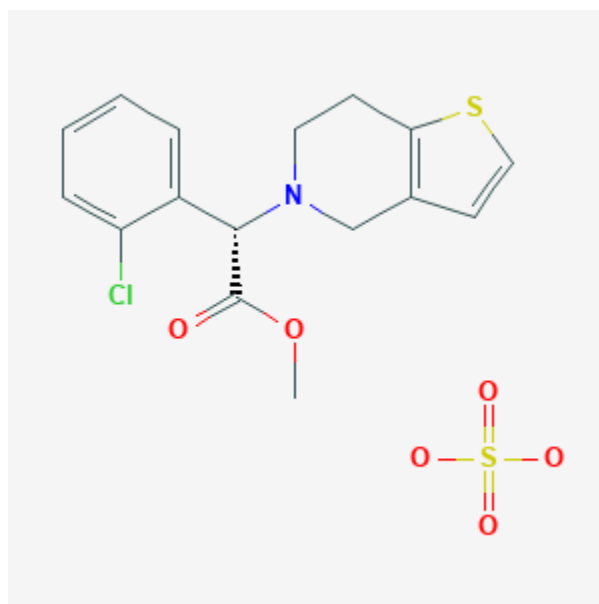




## Clopidogrel

Revised: June 3, 2019.

CASRN: 120202-66-6



## Drug Levels and Effects

### Summary of Use during Lactation

No published information is available on the use of clopidogrel during breastfeeding. The manufacturer reports that no adverse effects have been observed in breastfed infants with maternal clopidogrel use during lactation in a small number of postmarketing cases. Since no published information is available on the use of clopidogrel during breastfeeding, an alternate drug may be preferred, especially while nursing a newborn or preterm infant. If it is used by a nursing mother, monitor the infant for bruising and bleeding.

### Drug Levels

*Maternal Levels.* Relevant published information was not found as of the revision date.

**Disclaimer:** Information presented in this database is not meant as a substitute for professional judgment. You should consult your healthcare provider for breastfeeding advice related to your particular situation. The U.S. government does not warrant or assume any liability or responsibility for the accuracy or completeness of the information on this Site.

**Attribution Statement:** LactMed is a registered trademark of the U.S. Department of Health and Human Services.

*Infant Levels.* Relevant published information was not found as of the revision date.

### **Effects in Breastfed Infants**

Relevant published information was not found as of the revision date.

### **Effects on Lactation and Breastmilk**

Relevant published information was not found as of the revision date.

### **Alternate Drugs to Consider**

Aspirin

## **Substance Identification**

### **Substance Name**

Clopidogrel

### **CAS Registry Number**

120202-66-6

### **Drug Class**

Lactation

Breast Feeding

Platelet Aggregation Inhibitors

Purinergic P2Y Receptor Antagonists