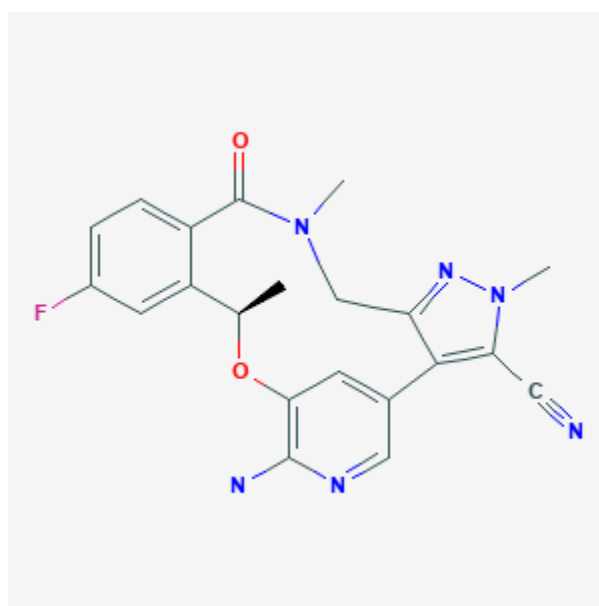




Lorlatinib

Revised: December 3, 2018.

CASRN: 1454846-35-5



Drug Levels and Effects

Summary of Use during Lactation

No information is available on the clinical use of lorlatinib during breastfeeding. The manufacturer recommends that breastfeeding be discontinued during lorlatinib therapy and for 7 days after the last dose.

Drug Levels

Maternal Levels. Relevant published information was not found as of the revision date.

Infant Levels. Relevant published information was not found as of the revision date.

Disclaimer: Information presented in this database is not meant as a substitute for professional judgment. You should consult your healthcare provider for breastfeeding advice related to your particular situation. The U.S. government does not warrant or assume any liability or responsibility for the accuracy or completeness of the information on this Site.

Attribution Statement: LactMed is a registered trademark of the U.S. Department of Health and Human Services.

Effects in Breastfed Infants

Relevant published information was not found as of the revision date.

Effects on Lactation and Breastmilk

Relevant published information was not found as of the revision date.

Substance Identification

Substance Name

Lorlatinib

CAS Registry Number

1454846-35-5

Drug Class

Antineoplastic Agents

Enzyme Inhibitors

Protein Kinase Inhibitors

Signal Transduction Inhibitors

Tyrosine Kinase Inhibitors