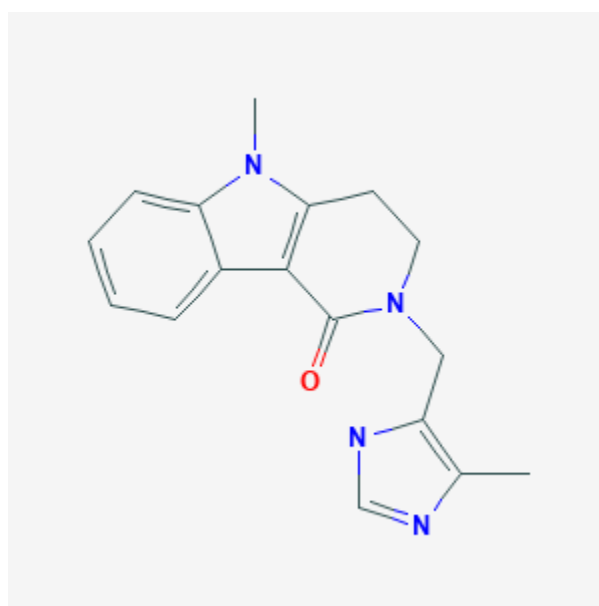




Alosetron

Revised: February 7, 2019.

CASRN: 122852-42-0



Drug Levels and Effects

Summary of Use during Lactation

No information is available on the use of alosetron during breastfeeding. Because of relatively high protein binding and only moderate bioavailability, exposure of the breastfed infant is likely to be low. Until more data are available, alosetron should only be used with careful infant monitoring during breastfeeding.

Drug Levels

Maternal Levels. Relevant published information was not found as of the revision date.

Infant Levels. Relevant published information was not found as of the revision date.

Disclaimer: Information presented in this database is not meant as a substitute for professional judgment. You should consult your healthcare provider for breastfeeding advice related to your particular situation. The U.S. government does not warrant or assume any liability or responsibility for the accuracy or completeness of the information on this Site.

Attribution Statement: LactMed is a registered trademark of the U.S. Department of Health and Human Services.

Effects in Breastfed Infants

Relevant published information was not found as of the revision date.

Effects on Lactation and Breastmilk

Relevant published information was not found as of the revision date.

Substance Identification

Substance Name

Alosetron

CAS Registry Number

122852-42-0

Drug Class

Breast Feeding

Lactation

Gastrointestinal Agents

Serotonin Antagonists