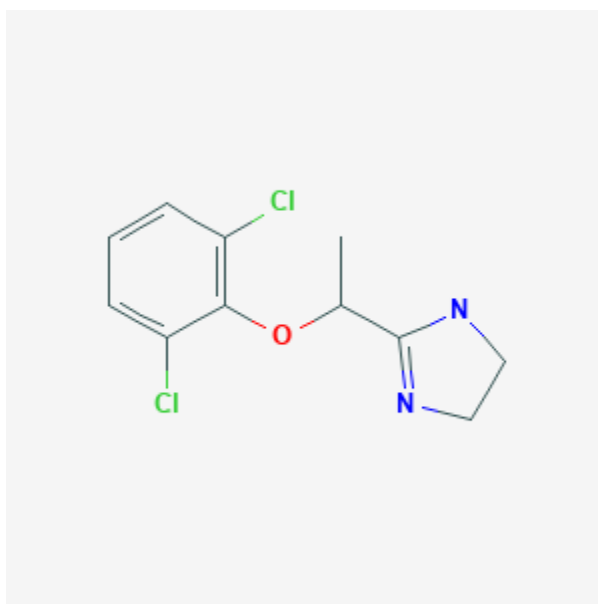




Lofexidine

Revised: December 3, 2018.

CASRN: 31036-80-3



Drug Levels and Effects

Summary of Use during Lactation

No information is available on the use of lofexidine during breastfeeding. Lofexidine is chemically and pharmacologically related to clonidine, which reaches high levels in milk and in the breastfed infant. Although it is not contraindicated during breastfeeding, lofexidine should be used with caution during breastfeeding, especially while nursing a newborn or preterm infant. An alternate drug may be preferred, especially while nursing a newborn or preterm infant.

Drug Levels

Maternal Levels. Relevant published information was not found as of the revision date.

Disclaimer: Information presented in this database is not meant as a substitute for professional judgment. You should consult your healthcare provider for breastfeeding advice related to your particular situation. The U.S. government does not warrant or assume any liability or responsibility for the accuracy or completeness of the information on this Site.

Attribution Statement: LactMed is a registered trademark of the U.S. Department of Health and Human Services.

Infant Levels. Relevant published information was not found as of the revision date.

Effects in Breastfed Infants

Relevant published information was not found as of the revision date.

Effects on Lactation and Breastmilk

Relevant published information was not found as of the revision date.

Alternate Drugs to Consider

Buprenorphine, Methadone

Substance Identification

Substance Name

Lofexidine

CAS Registry Number

31036-80-3

Drug Class

Breast Feeding

Lactation

Adrenergic Alpha-2 Receptor Agonists,

Narcotic Antagonists