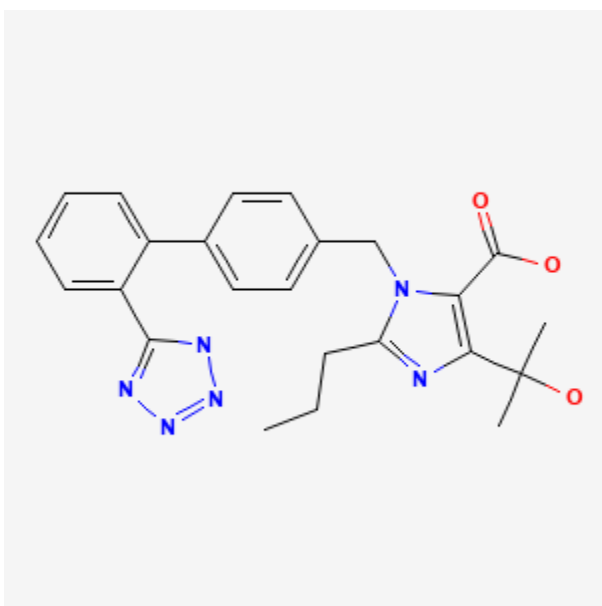




Olmesartan

Revised: August 15, 2023.

CASRN: 144689-24-7



Drug Levels and Effects

Summary of Use during Lactation

With the exception of one adverse reaction in a breastfed infant, no information is available on the use of olmesartan during breastfeeding. An alternate drug may be preferred, especially while nursing a newborn or preterm infant.

Drug Levels

Maternal Levels. Relevant published information was not found as of the revision date.

Infant Levels. Relevant published information was not found as of the revision date.

Disclaimer: Information presented in this database is not meant as a substitute for professional judgment. You should consult your healthcare provider for breastfeeding advice related to your particular situation. The U.S. government does not warrant or assume any liability or responsibility for the accuracy or completeness of the information on this Site.

Attribution Statement: LactMed is a registered trademark of the U.S. Department of Health and Human Services.

Effects in Breastfed Infants

A 6-day-old healthy full-term newborn was exposed to olmesartan in breastmilk. The maternal dose of olmesartan and extent of nursing were not reported. Weight gain was normal during the first two weeks of life, but at the pediatric checkup on the 17th day postpartum, an abrupt decrease in body weight was recorded. He was hospitalized on the 21st day, and mixed feeding with milk and formula was started. Biochemical examinations showed aspartate-aminotransferase (AST) 250 mg/dL, and regular urinalysis. Virologic and metabolic causes of elevated transaminase were ruled out. The baby started to regain weight and his AST gradually normalized to 50 mg/dL by the 24th day. Olmesartan intake was stopped and the child was discharged on the 24th day of life.[1]

Effects on Lactation and Breastmilk

Relevant published information was not found as of the revision date.

Alternate Drugs to Consider

Candesartan, Captopril, Benazepril, Enalapril, Quinapril

References

1. Salimova M, Maggi M, Crevani M, et al. Olmesartan-induced reversible transaminase elevation in a breastfed newborn. A case report. *Neurotoxicol Teratol* 2023;98:24. doi:10.1016/j.ntt.2023.107236

Substance Identification

Substance Name

Olmesartan

CAS Registry Number

144689-24-7

Drug Class

Breast Feeding

Lactation

Milk, Human

Antihypertensive Agents

Angiotensin II Type 1 Receptor Blockers

Angiotensin Receptor Blockers

ARBs