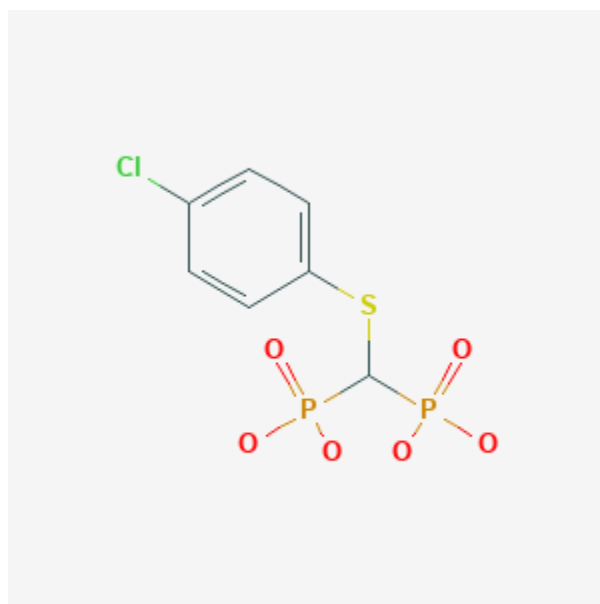




Tiludronate

Revised: December 3, 2018.

CASRN: 89987-06-4



Drug Levels and Effects

Summary of Use during Lactation

Because no information is available on the use of tiludronate during breastfeeding, an alternate drug may be preferred, especially while nursing a newborn or preterm infant. However, absorption of tiludronate by a breastfed infant is unlikely.

Drug Levels

Tiludronate is highly bound to calcium and is poorly absorbed orally (average in adults 6% on an empty stomach, 0.6% with food), so absorption of tiludronate by a breastfed infant is unlikely.

Maternal Levels. Relevant published information was not found as of the revision date.

Disclaimer: Information presented in this database is not meant as a substitute for professional judgment. You should consult your healthcare provider for breastfeeding advice related to your particular situation. The U.S. government does not warrant or assume any liability or responsibility for the accuracy or completeness of the information on this Site.

Attribution Statement: LactMed is a registered trademark of the U.S. Department of Health and Human Services.

Infant Levels. Relevant published information was not found as of the revision date.

Effects in Breastfed Infants

Relevant published information was not found as of the revision date.

Effects on Lactation and Breastmilk

Relevant published information was not found as of the revision date.

Alternate Drugs to Consider

Pamidronate

Substance Identification

Substance Name

Tiludronate

CAS Registry Number

89987-06-4

Drug Class

Breast Feeding

Lactation

Bisphosphonates

Bone Density Conservation Agents

Diphosphonates