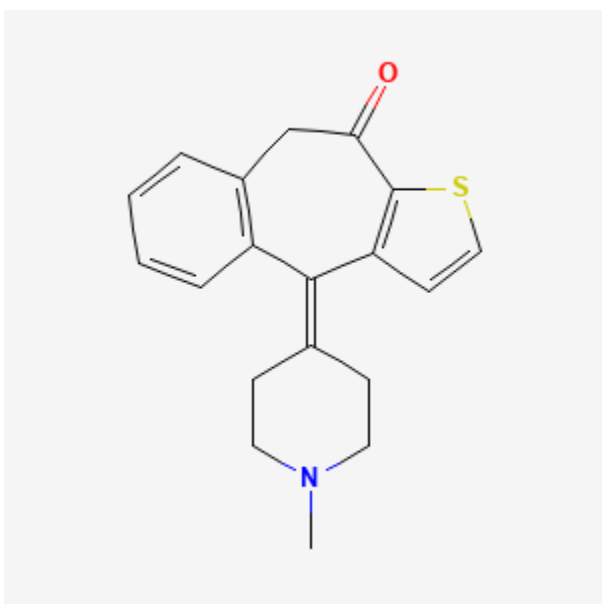




## Ketotifen

Revised: October 19, 2020.

CASRN: 34580-13-7



## Drug Levels and Effects

### Summary of Use during Lactation

Because absorption from the eye is limited, ketotifen would not be expected to cause any adverse effects in breastfed infants after maternal use of ketotifen eye drops. To substantially diminish the amount of drug that reaches the breastmilk after using eye drops, place pressure over the tear duct by the corner of the eye for 1 minute or more, then remove the excess solution with an absorbent tissue.

### Drug Levels

*Maternal Levels.* Relevant published information was not found as of the revision date.

*Infant Levels.* Relevant published information was not found as of the revision date.

**Disclaimer:** Information presented in this database is not meant as a substitute for professional judgment. You should consult your healthcare provider for breastfeeding advice related to your particular situation. The U.S. government does not warrant or assume any liability or responsibility for the accuracy or completeness of the information on this Site.

**Attribution Statement:** LactMed is a registered trademark of the U.S. Department of Health and Human Services.

## Effects in Breastfed Infants

Relevant published information was not found as of the revision date.

## Effects on Lactation and Breastmilk

Relevant published information was not found as of the revision date.

## Alternate Drugs to Consider

Cromolyn

## Substance Identification

### Substance Name

Ketotifen

### CAS Registry Number

34580-13-7

### Drug Class

Breast Feeding

Lactation

Anti-Allergic Agents

Antihistamines

Antipruritic