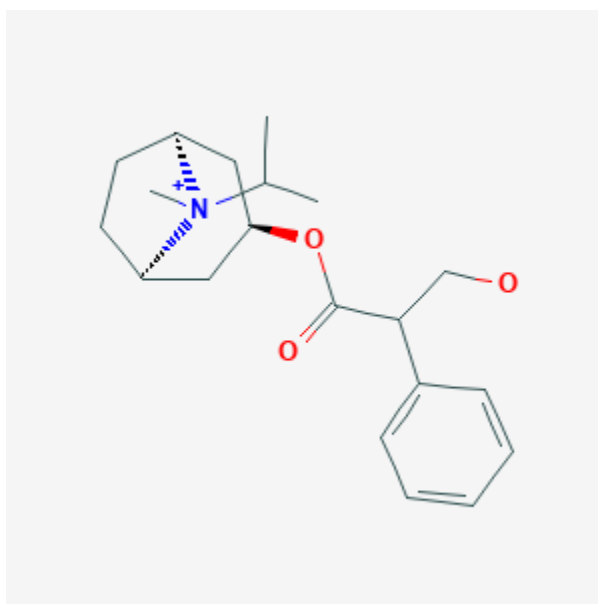




## Ipratropium

Revised: December 3, 2018.

CASRN: 60205-81-4



## Drug Levels and Effects

### Summary of Use during Lactation

Although no published data exist on the use of ipratropium, its use produces negligible maternal serum levels and any drug in breastmilk would not be absorbed by the infant. The risk to the breastfed infant of maternal ipratropium inhalation is small.

### Drug Levels

*Maternal Levels.* Relevant published information was not found as of the revision date.

*Infant Levels.* Relevant published information was not found as of the revision date.

**Disclaimer:** Information presented in this database is not meant as a substitute for professional judgment. You should consult your healthcare provider for breastfeeding advice related to your particular situation. The U.S. government does not warrant or assume any liability or responsibility for the accuracy or completeness of the information on this Site.

**Attribution Statement:** LactMed is a registered trademark of the U.S. Department of Health and Human Services.

## Effects in Breastfed Infants

Relevant published information was not found as of the revision date.

## Effects on Lactation and Breastmilk

Relevant published information was not found as of the revision date.

## Alternate Drugs to Consider

Albuterol, Salmeterol

## Substance Identification

### Substance Name

Ipratropium

### CAS Registry Number

60205-81-4

### Drug Class

Breast Feeding

Lactation

Anti-Asthmatic Agents

Bronchodilator Agents

Muscarinic Antagonists

Parasympatholytics