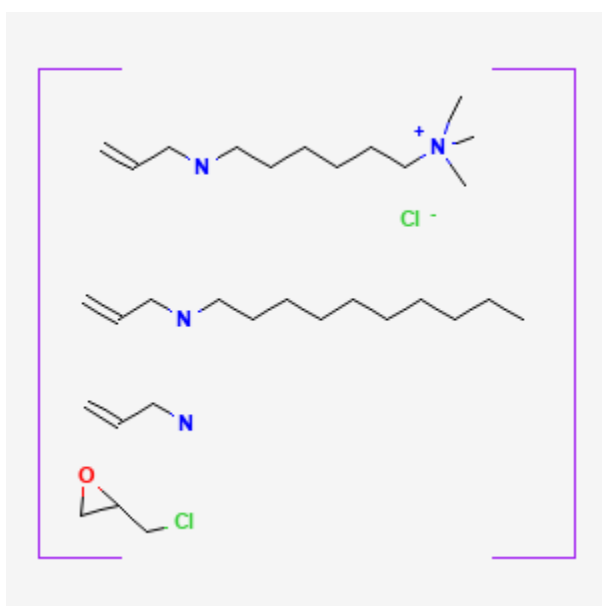




## Colesevelam

Revised: September 19, 2022.

CASRN: 182815-43-6



## Drug Levels and Effects

### Summary of Use during Lactation

Colesevelam is a nonabsorbable resin. Because it does not enter the mother's bloodstream, it will not reach the infant via breastmilk. It is acceptable for use during lactation.

### Drug Levels

*Maternal Levels.* Relevant published information was not found as of the revision date.

*Infant Levels.* Relevant published information was not found as of the revision date.

**Disclaimer:** Information presented in this database is not meant as a substitute for professional judgment. You should consult your healthcare provider for breastfeeding advice related to your particular situation. The U.S. government does not warrant or assume any liability or responsibility for the accuracy or completeness of the information on this Site.

**Attribution Statement:** LactMed is a registered trademark of the U.S. Department of Health and Human Services.

## Effects in Breastfed Infants

Relevant published information was not found as of the revision date.

## Effects on Lactation and Breastmilk

Relevant published information was not found as of the revision date.

## Alternate Drugs to Consider

(Hypercholesterolemia) Cholestyramine, Colestipol; (Type 2 Diabetes) Acarbose, Glipizide, Glyburide, Insulin, Metformin, Miglitol

## Substance Identification

### Substance Name

Colesevelam

### CAS Registry Number

182815-43-6

### Drug Class

Breast Feeding

Lactation

Milk, Human

Anticholesteremic Agents

Antilipemic Agents

Hypoglycemic Agents