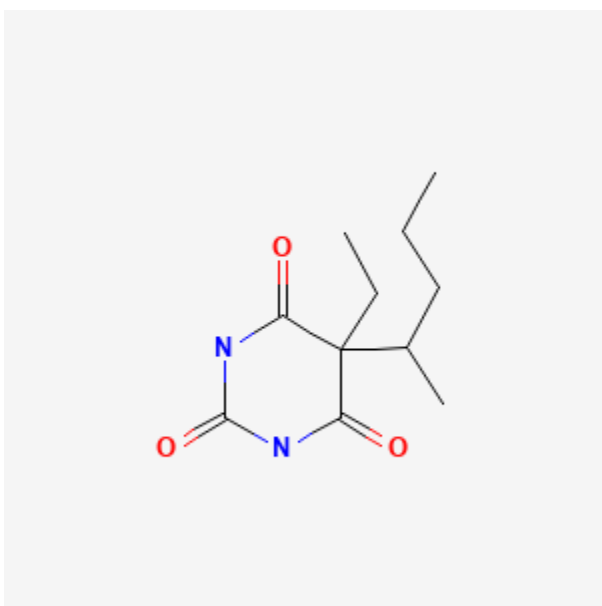




## Pentobarbital

Revised: February 15, 2023.

CASRN: 76-74-4



## Drug Levels and Effects

### Summary of Use during Lactation

Because there is little published experience with pentobarbital during breastfeeding, other agents may be preferred, especially while nursing a newborn or preterm infant. If pentobarbital is used, monitor the infant for sedation, poor feeding and poor weight gain.

### Drug Levels

*Maternal Levels.* A mother who was 4 days postpartum had taken pentobarbital 100 mg daily for 3 days. A milk level of 170 mcg/L was measured 19 hours after the previous dose.[1]

*Infant Levels.* Relevant published information was not found as of the revision date.

**Disclaimer:** Information presented in this database is not meant as a substitute for professional judgment. You should consult your healthcare provider for breastfeeding advice related to your particular situation. The U.S. government does not warrant or assume any liability or responsibility for the accuracy or completeness of the information on this Site.

**Attribution Statement:** LactMed is a registered trademark of the U.S. Department of Health and Human Services.

## Effects in Breastfed Infants

Relevant published information was not found as of the revision date.

## Effects on Lactation and Breastmilk

Relevant published information was not found as of the revision date.

## Alternate Drugs to Consider

Zaleplon, Zolpidem

## References

1. Horning MG, Stillwell WG, Nowlin J, et al. Identification and quantification of drugs and drug metabolites in human breast milk using GC-MS-COM methods. *Mod Probl Paediatr.* 1975;15:73-9.

## Substance Identification

### Substance Name

Pentobarbital

### CAS Registry Number

76-74-4

### Drug Class

Breast Feeding

Lactation

Milk, Human

Barbiturates

Hypnotics and Sedatives

GABA Modulators