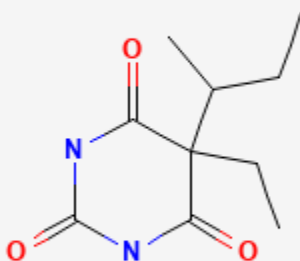




Butabarbital

Revised: February 15, 2023.

CASRN: 125-40-6



Drug Levels and Effects

Summary of Use during Lactation

Because there is little published experience with butabarbital during breastfeeding, other agents may be preferred, especially while nursing a newborn or preterm infant. Monitor the infant for sedation, poor feeding and poor weight gain.

Drug Levels

Maternal Levels. A mother who was 4 days postpartum had taken butabarbital 8 mg twice daily for 3.5 days. A milk level of 370 mcg/L was measured 1.5 hours after the previous dose.[1]

Infant Levels. Relevant published information was not found as of the revision date.

Disclaimer: Information presented in this database is not meant as a substitute for professional judgment. You should consult your healthcare provider for breastfeeding advice related to your particular situation. The U.S. government does not warrant or assume any liability or responsibility for the accuracy or completeness of the information on this Site.

Attribution Statement: LactMed is a registered trademark of the U.S. Department of Health and Human Services.

Effects in Breastfed Infants

Relevant published information was not found as of the revision date.

Effects on Lactation and Breastmilk

Relevant published information was not found as of the revision date.

Alternate Drugs to Consider

Lorazepam, Oxazepam, Zaleplon, Zolpidem

References

1. Horning MG, Stillwell WG, Nowlin J, et al. Identification and quantification of drugs and drug metabolites in human breast milk using GC-MS-COM methods. *Mod Probl Paediatr.* 1975;15:73–9.

Substance Identification

Substance Name

Butabarbital

CAS Registry Number

125-40-6

Drug Class

Breast Feeding

Lactation

Milk, Human

Barbiturates

Hypnotics and Sedatives

GABA Modulators