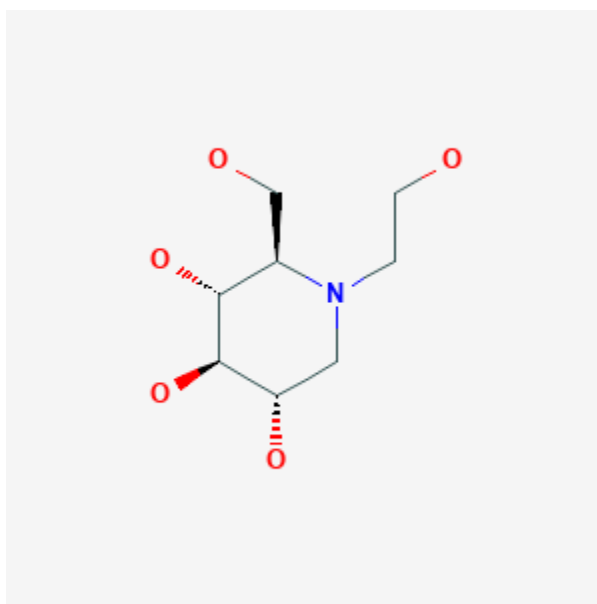




Miglitol

Revised: October 31, 2018.

CASRN: 72432-03-2



Drug Levels and Effects

Summary of Use during Lactation

Limited data indicate that miglitol is poorly excreted into breastmilk. Because miglitol is also poorly absorbed orally, it is unlikely to adversely affect the breastfed infant.

Drug Levels

Maternal Levels. No published information was found as of the revision date. According to the manufacturer, 0.02% of a 100 mg oral dose or 0.2% of the weight-adjusted maternal dosage is excreted into breastmilk.

Infant Levels. Relevant published information was not found as of the revision date.

Disclaimer: Information presented in this database is not meant as a substitute for professional judgment. You should consult your healthcare provider for breastfeeding advice related to your particular situation. The U.S. government does not warrant or assume any liability or responsibility for the accuracy or completeness of the information on this Site.

Attribution Statement: LactMed is a registered trademark of the U.S. Department of Health and Human Services.

Effects in Breastfed Infants

Relevant published information was not found as of the revision date.

Effects on Lactation and Breastmilk

Relevant published information was not found as of the revision date.

Alternate Drugs to Consider

Acarbose, Glipizide, Glyburide, Insulin, Metformin

Substance Identification

Substance Name

Miglitol

CAS Registry Number

72432-03-2

Drug Class

Breast Feeding

Lactation

Hypoglycemic Agents