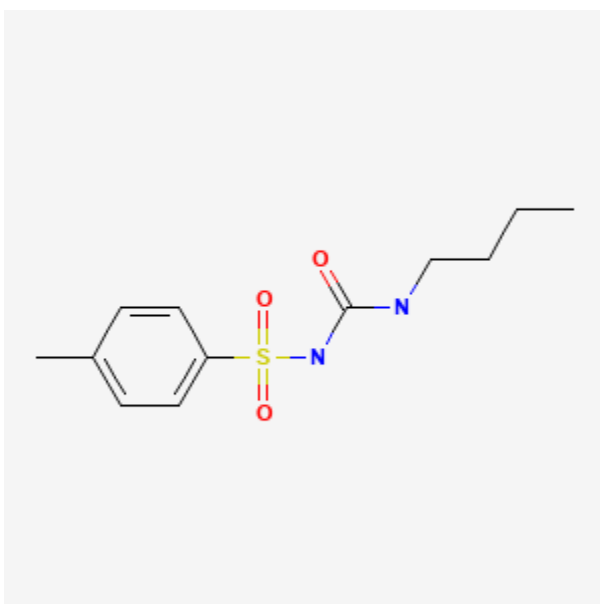




Tolbutamide

Revised: September 15, 2023.

CASRN: 64-77-7



Drug Levels and Effects

Summary of Use during Lactation

Tolbutamide is no longer marketed in the United States. It is excreted into breastmilk in small amounts that should cause no harm to the breastfed infant. Monitor breastfed infants for signs of hypoglycemia such as jitteriness, excessive sleepiness, poor feeding, seizures cyanosis, apnea, or hypothermia. If there is concern, monitoring of the breastfed infant's blood glucose is advisable during maternal therapy with hypoglycemic agents.[1,2]

Disclaimer: Information presented in this database is not meant as a substitute for professional judgment. You should consult your healthcare provider for breastfeeding advice related to your particular situation. The U.S. government does not warrant or assume any liability or responsibility for the accuracy or completeness of the information on this Site.

Attribution Statement: LactMed is a registered trademark of the U.S. Department of Health and Human Services.

Drug Levels

Maternal Levels. In 2 women who were 3 days postpartum, milk levels were measured 4 hours after ingestion of a 500 mg dose of tolbutamide. Milk levels averaged 18 mg/L in one and 3 mg/L in the other.[3]

Infant Levels. Relevant published information was not found as of the revision date.

Effects in Breastfed Infants

Relevant published information was not found as of the revision date.

Effects on Lactation and Breastmilk

Relevant published information was not found as of the revision date.

Alternate Drugs to Consider

Acarbose, Glipizide, Glyburide, Insulin, Metformin, Miglitol

References

1. Everett JA. Use of oral antidiabetic agents during breastfeeding. *J Hum Lact* 1997;13:319-21. PubMed PMID: 9429368.
2. Berlin CM, Briggs GG. Drugs and chemicals in human milk. *Semin Fetal Neonatal Med* 2005;10:149-59. PubMed PMID: 15701580.
3. Moiel RH, Ryan JR. Tolbutamide Orinase in human breast milk. *Clin Pediatr (Phila)* 1967;8:480.

Substance Identification

Substance Name

Tolbutamide

CAS Registry Number

64-77-7

Drug Class

Breast Feeding

Lactation

Milk, Human

Hypoglycemic Agents

Sulfonylurea Compounds