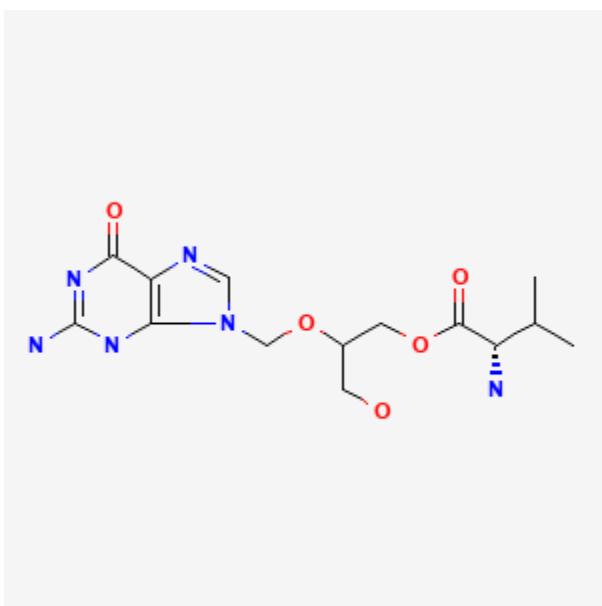




Valganciclovir

Revised: August 16, 2021.

CASRN: 175865-60-8



Drug Levels and Effects

Summary of Use during Lactation

Valganciclovir is rapidly converted to ganciclovir. Several factors might affect the decision to use valganciclovir in a nursing mother. No information is available on the clinical use of ganciclovir or valganciclovir during breastfeeding. Cytomegalovirus (CMV) can be transmitted to infants through breastmilk, with preterm and immunocompromised infants at greatest risk. No information is available on any changes in the risk of transmission if the mother is being treated with ganciclovir or valganciclovir. Although the manufacturer recommends avoiding breastfeeding during valganciclovir use because of the risk of infant drug toxicity, neonates with CMV infections are often treated directly with ganciclovir or valganciclovir. If the mother has a concurrent infection with HIV, breastfeeding is not recommended in the United States and other developed countries.

Disclaimer: Information presented in this database is not meant as a substitute for professional judgment. You should consult your healthcare provider for breastfeeding advice related to your particular situation. The U.S. government does not warrant or assume any liability or responsibility for the accuracy or completeness of the information on this Site.

Attribution Statement: LactMed is a registered trademark of the U.S. Department of Health and Human Services.

Drug Levels

Maternal Levels. Relevant published information was not found as of the revision date.

Infant Levels. Relevant published information was not found as of the revision date.

Effects in Breastfed Infants

Relevant published information was not found as of the revision date.

Effects on Lactation and Breastmilk

Relevant published information was not found as of the revision date.

Substance Identification

Substance Name

Valganciclovir

CAS Registry Number

175865-60-8

Drug Class

Breast Feeding

Lactation

Anti-Infective Agents

Antiviral Agents