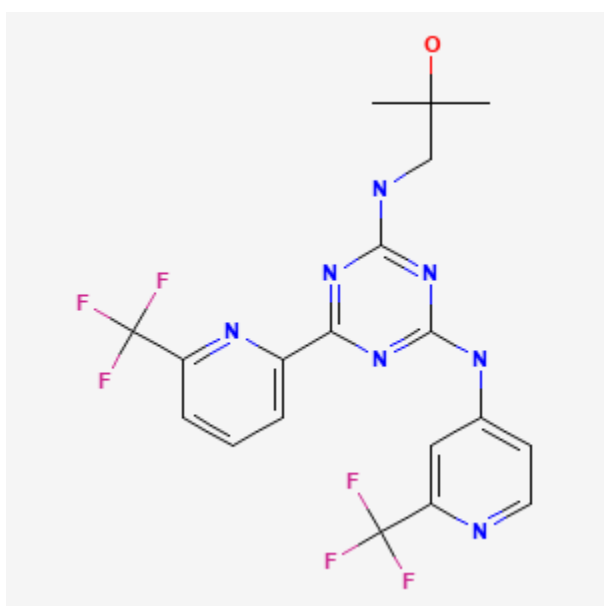




## Enasidenib

Revised: December 21, 2020.

CASRN: 1446502-11-9



## Drug Levels and Effects

### Summary of Use during Lactation

No information is available on the clinical use of enasidenib during breastfeeding. Because enasidenib is 98.5% bound to plasma proteins and its active metabolite is 96.6% bound to plasma proteins, the amount in milk is likely to be low. However, the half-life of enasidenib is 137 hours and it might accumulate in the infant. The manufacturer recommends that breastfeeding be discontinued during enasidenib therapy and for at least 2 months after the end of therapy.

### Drug Levels

*Maternal Levels.* Relevant published information was not found as of the revision date.

**Disclaimer:** Information presented in this database is not meant as a substitute for professional judgment. You should consult your healthcare provider for breastfeeding advice related to your particular situation. The U.S. government does not warrant or assume any liability or responsibility for the accuracy or completeness of the information on this Site.

**Attribution Statement:** LactMed is a registered trademark of the U.S. Department of Health and Human Services.

*Infant Levels.* Relevant published information was not found as of the revision date.

### **Effects in Breastfed Infants**

Relevant published information was not found as of the revision date.

### **Effects on Lactation and Breastmilk**

Relevant published information was not found as of the revision date.

## **Substance Identification**

### **Substance Name**

Enasidenib

### **CAS Registry Number**

1446502-11-9

### **Drug Class**

Breast Feeding

Lactation

Antineoplastic Agents

Enzyme Inhibitors

Isocitrate Dehydrogenase Inhibitors