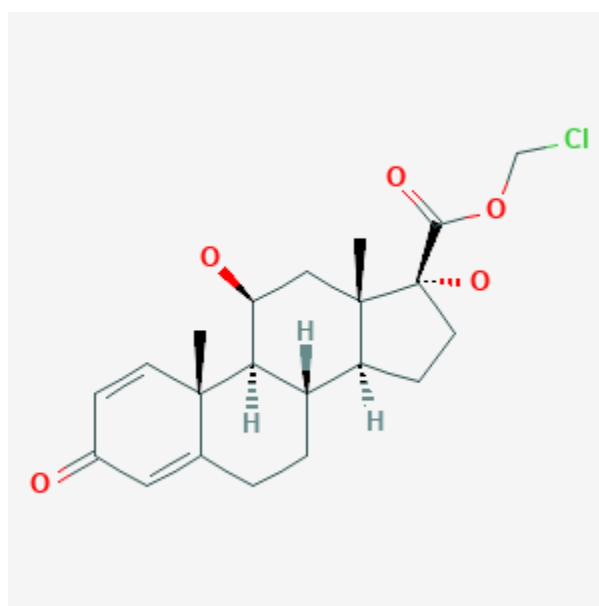




Loteprednol

Revised: February 28, 2019.

CASRN: 129260-79-3



Drug Levels and Effects

Summary of Use during Lactation

No information is available on the ophthalmic use of loteprednol during breastfeeding. Because absorption from the eye is limited, ophthalmic loteprednol would not be expected to cause any adverse effects in breastfed infants. To substantially diminish the amount of drug that reaches the breastmilk after using eye drops, place pressure over the tear duct by the corner of the eye for 1 minute or more, then remove the excess solution with an absorbent tissue.

Drug Levels

Maternal Levels. Relevant published information was not found as of the revision date.

Disclaimer: Information presented in this database is not meant as a substitute for professional judgment. You should consult your healthcare provider for breastfeeding advice related to your particular situation. The U.S. government does not warrant or assume any liability or responsibility for the accuracy or completeness of the information on this Site.

Attribution Statement: LactMed is a registered trademark of the U.S. Department of Health and Human Services.

Infant Levels. Relevant published information was not found as of the revision date.

Effects in Breastfed Infants

Relevant published information was not found as of the revision date.

Effects on Lactation and Breastmilk

Relevant published information was not found as of the revision date.

Alternate Drugs to Consider

Prednisolone

Substance Identification

Substance Name

Loteprednol

CAS Registry Number

129260-79-3

Drug Class

Breast Feeding

Lactation

Anti-Inflammatory Agents

Corticosteroids, Ophthalmic

Glucocorticoids