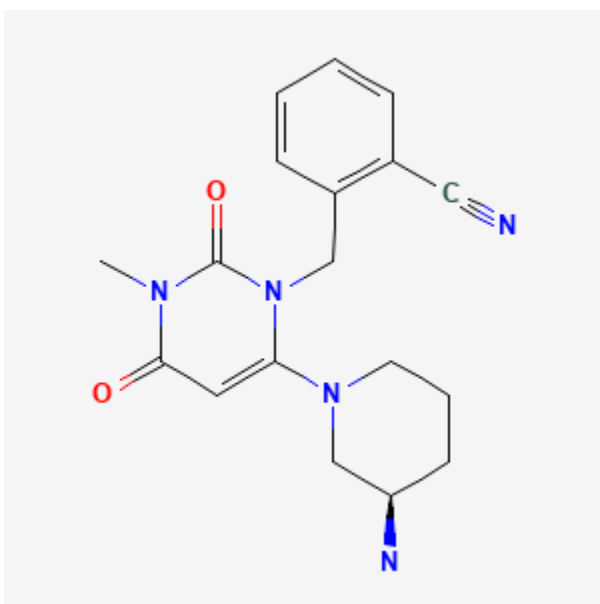




## Alogliptin

Revised: June 21, 2021.

CASRN: 850649-61-5



## Drug Levels and Effects

### Summary of Use during Lactation

No information is available on the clinical use of alogliptin during breastfeeding. An alternate drug may be preferred, especially while nursing a newborn or preterm infant. Monitoring of the breastfed infant's blood glucose is advisable during maternal therapy with alogliptin.[1]

### Drug Levels

*Maternal Levels.* Relevant published information was not found as of the revision date.

*Infant Levels.* Relevant published information was not found as of the revision date.

**Disclaimer:** Information presented in this database is not meant as a substitute for professional judgment. You should consult your healthcare provider for breastfeeding advice related to your particular situation. The U.S. government does not warrant or assume any liability or responsibility for the accuracy or completeness of the information on this Site.

**Attribution Statement:** LactMed is a registered trademark of the U.S. Department of Health and Human Services.

## Effects in Breastfed Infants

Relevant published information was not found as of the revision date.

## Effects on Lactation and Breastmilk

Relevant published information was not found as of the revision date.

## Alternate Drugs to Consider

Acarbose, Glipizide, Glyburide, Insulin, Metformin, Miglitol

## References

1. Berlin CM, Briggs GG. Drugs and chemicals in human milk. *Semin Fetal Neonatal Med.* 2005;10:149–59. PubMed PMID: 15701580.

## Substance Identification

### Substance Name

Alogliptin

### CAS Registry Number

850649-61-5

### Drug Class

Breast Feeding

Lactation

Hypoglycemic Agents

Incretins

Dipeptidyl-Peptidase IV Inhibitors

DPP-4 Inhibitors