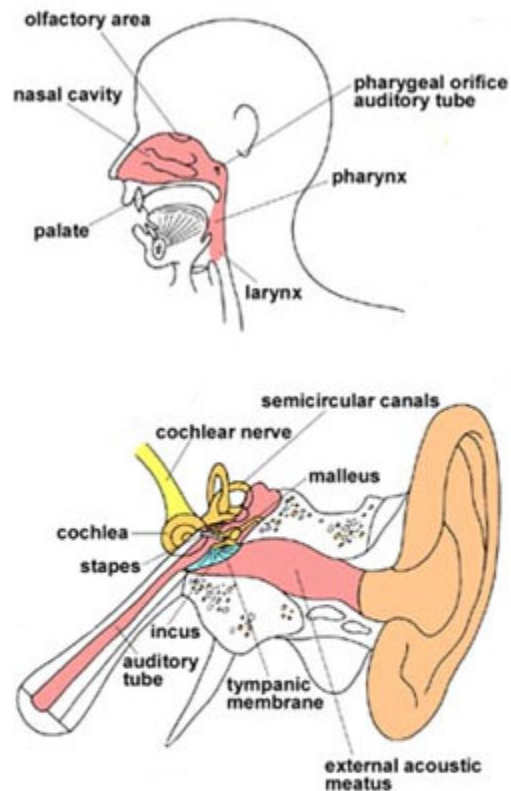




## Ear, Nose, and Throat



The human ear, nose and throat are related in their functions, and thus often in the disorders that affect them. The ear is connected with the nose and throat by the auditory (or Eustachian) tube, which leads to the pharynx.

[Reproduced from University of Maryland Medical School, Otolaryngology Health guide, with permission]

Within the structures of the ear, nose and throat are complex and interrelated mechanisms that allow a person to make sound, hear, maintain balance, smell, breathe, and swallow. Traditionally, treatment of the ear — otology — was associated with that of the eye in medical practice. With the development of laryngology — the study of the throat — in the late 19th century, the connection between the ear and throat became known. Thus the birth of a discipline called otolaryngology.

Many people associate otolaryngologists with the treatment of ear infections, hearing loss and sinus problems. Otolaryngology actually encompasses the treatment of many diverse conditions, including: dizziness, facial plastic and reconstructive surgery, head and neck cancer, hearing loss, problems of the larynx and sinus, difficulties swallowing, tumors of the auditory nerve, and voice production.

When diagnosing ear, nose, and throat disorders, it is important to differentiate genetic disorders from those due to environmental influences. This is often difficult as similar clinical features may be produced by different environmental factors or by different genes or groups of genes.

## **Diseases**

Deafness

Neurofibromatosis

Pendred syndrome